









INTERDISCIPLINARY SCIENCE & ENGINEERING BUILDING 419 PHYSICAL SCIENCES QUAD

EVACUATION PLAN

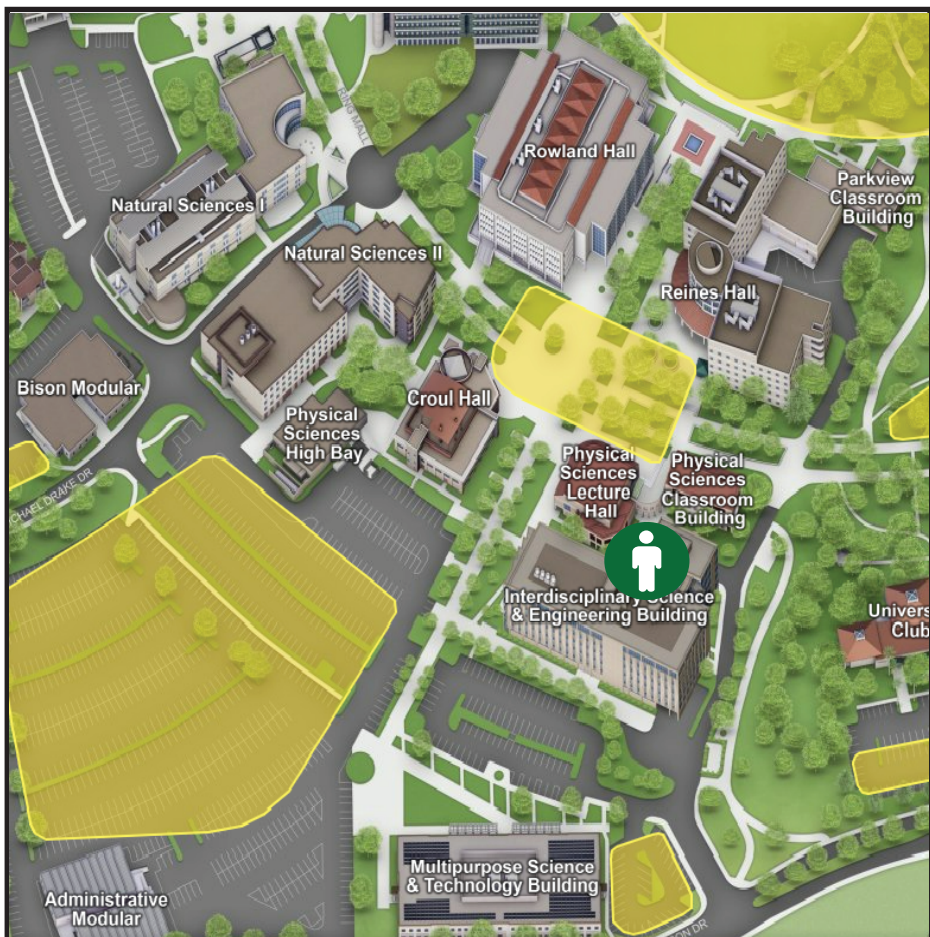
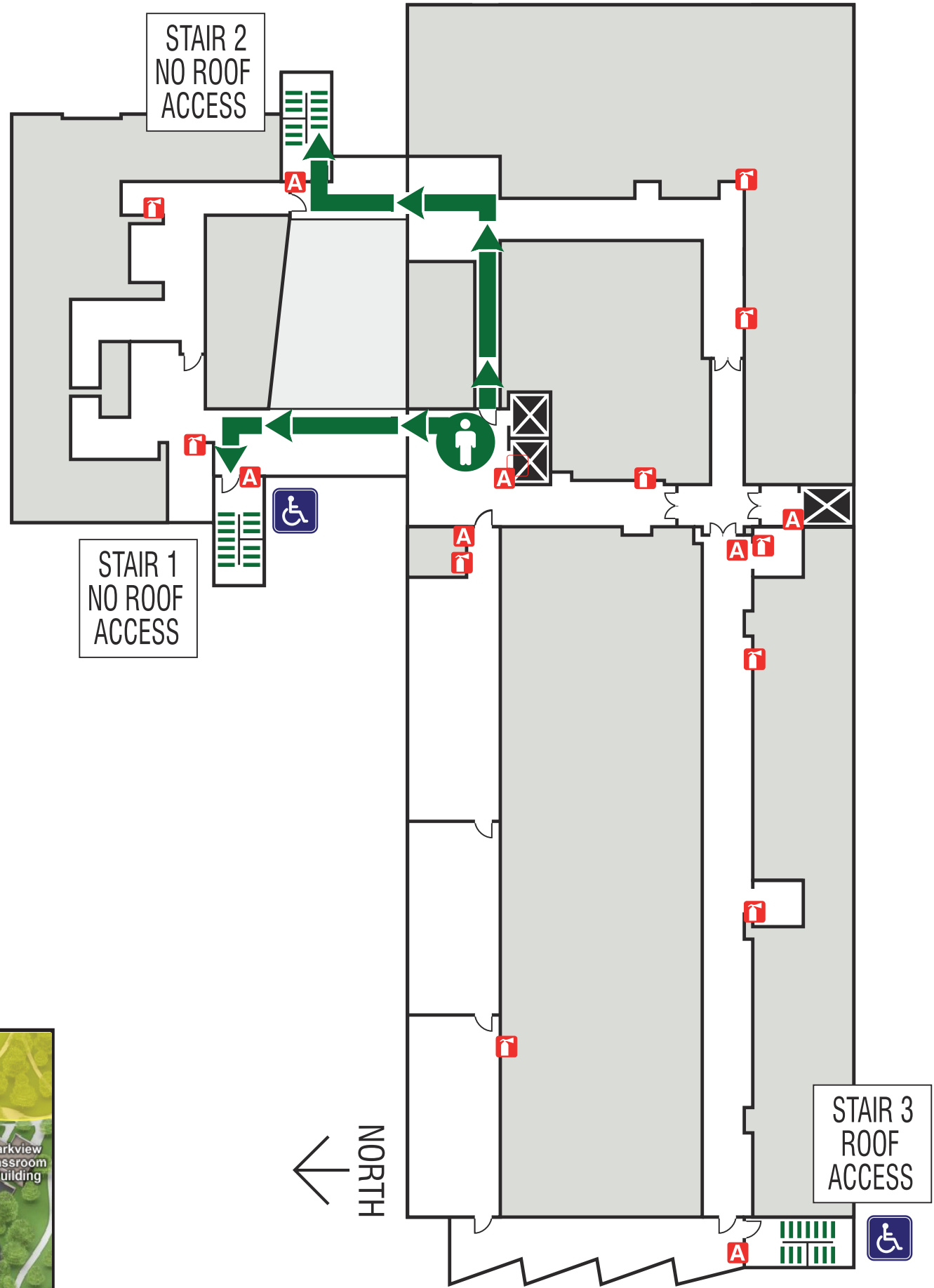
1ST FLOOR

-  YOU ARE HERE
-  EXIT ROUTES
-  STAIRWAY
-  ELEVATOR
-  EXTINGUISHER
-  ACCESSIBLE EXIT
-  FIRE ALARM PULL STATION
-  ASSEMBLY AREA

ALARM SOUNDS LIKE HORN
LOOKS LIKE FLASHING LIGHTS

EMERGENCY TELEPHONE
DIAL 9-1-1

**IN CASE OF FIRE USE
STAIRWAYS TO EXIT -
DO NOT USE ELEVATORS**



SCAN QR CODE FOR MORE
EMERGENCY RESPONSE
PROCEDURES AND STAIR
CHAIR INSTRUCTIONS

